

MONTHLY MEMBERSHIP PROGRESS REPORT

LOCATION NEPAL

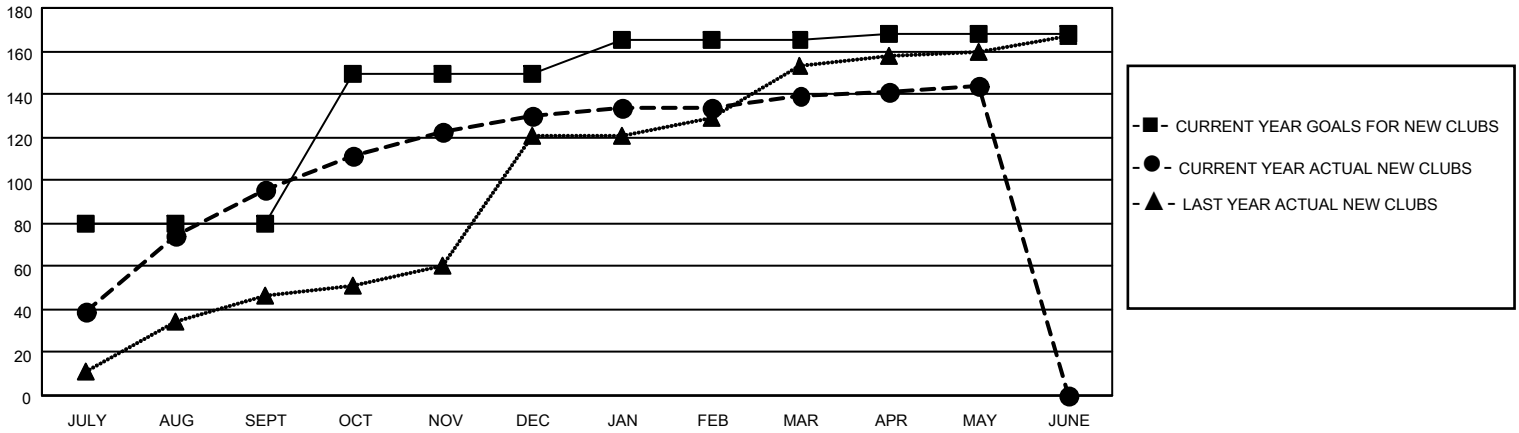
District 325B2

Results as of: 5/31/2022

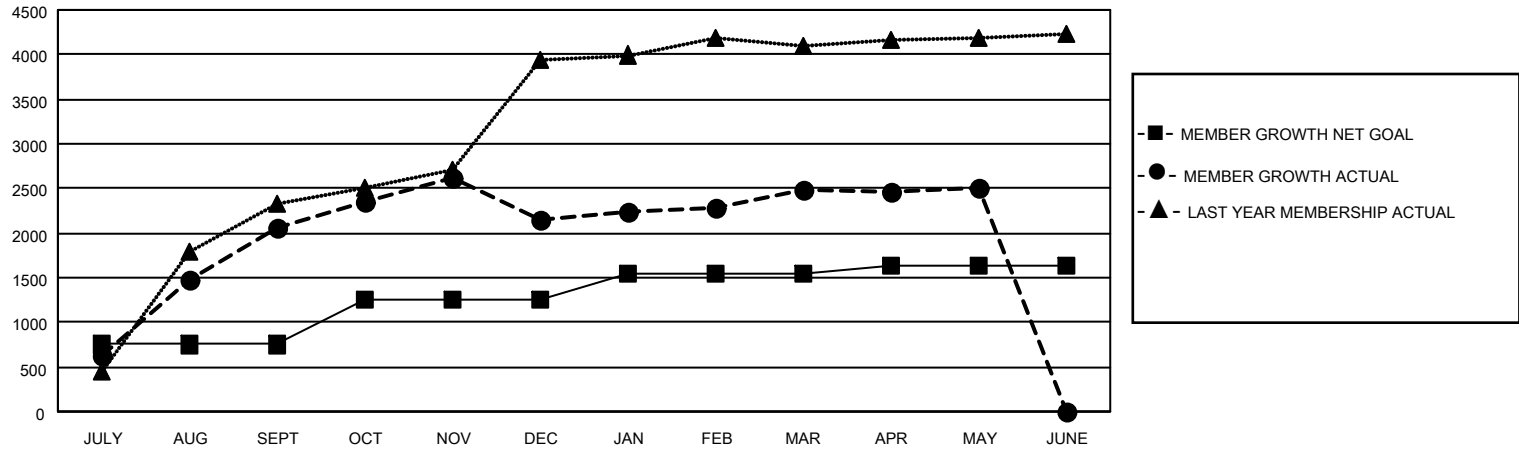
Clubs			
RESULTS FOR 2021-2022			
QUARTER	NEW CLUB GOAL	NEW CLUBS	DROPPED CLUBS
JULY/AUG/SEPT	80	96	14
OCT/NOV/DEC	70	34	10
JAN/FEB/MAR	15	9	3
APR/MAY/JUNE	3	5	0

Members			
RESULTS FOR 2021-2022			
QUARTER	MEMBER GROWTH NET GOAL	MEMBER GROWTH ACTUAL	DROPPED MEMBERS ACTUAL (including transfers)
JULY/AUG/SEPT	750	2944	863
OCT/NOV/DEC	500	952	853
JAN/FEB/MAR	300	638	270
APR/MAY/JUNE	90	247	219

GOALS AND ACTUAL NEW CLUBS CUMULATIVE



GOALS AND ACTUAL MEMBERS CUMULATIVE



DROPPED CLUBS: 27

390 CLUBS OF 668 ADDED 1 OR MORE NEW MEMBERS

GENDER DISTRIBUTION

DROPPED MEMBERS

DECEASED	19
CLUB CANCELLED	645
OTHER	1,542
TOTAL	2,206

[CLICK HERE FOR CUMULATIVE MEMBERSHIP DATA](#)

MALE	11,277 (73.00%)
FEMALE	4,169 (26.99%)
NON BINARY	0 (0.00%)
PREFER NOT TO ANSWER	2 (0.01%)

TOTAL FAMILY UNIT MEMBERS 13,283

FAMILY MEMBERS PAYING HALF DUES 8,756